



---

## VERO PRECISION LAB

---



## VERO LABORATORY ISLAND

**Introducing Premium Laboratory Island by VERO Spaces  
- Precision-Engineered for Modern Labs -**

An ISO 9001 : 2015 Certified Company

# CONTENT OVERVIEW

About Us 01

Fabrication 02

Applications 03

Allied Products 04





# ABOUT US

At VERO Spaces, we understand that the right laboratory furniture can make all the difference in the efficiency, safety, and productivity of your lab. That's why we're proud to offer our custom-built Laboratory Island Tables, designed to meet the highest standards of durability, functionality, and ergonomic excellence.

Whether you're working in pharmaceutical research, biotech, or educational institutions, our island tables provide the versatility and reliability needed to support your critical work.



## Here's why VERO's Laboratory Island Tables stand out:

**High-Grade Materials:** Our tables are constructed using robust, corrosion-resistant materials like stainless steel, powder-coated metal, and chemical-resistant surfaces. This ensures long-lasting performance even in demanding lab environments exposed to harsh chemicals, frequent cleaning, and heavy equipment.

**Stable & Sturdy:** With a solid, reinforced framework, our tables provide superior stability to support sensitive lab instruments and ensure a vibration-free work surface, critical for precision research and testing.

## Customizable to Meet Your Unique Lab Needs

Every lab is different, and we believe your furniture should reflect that. Our customization options allow you to configure:

**Table Sizes and Layouts:** Choose from various sizes and configurations based on the space and workflow needs of your lab.

**Integrated Features :** From sinks and faucets to reagent racks, electrical outlets, and gas connections, we design tables that seamlessly integrate with your lab's utilities and equipment.

**Storage Solutions:** Built-in cabinets, drawers, and shelves can be added to optimize storage, providing easy access to tools and equipment, while maintaining a clean, organized workspace.



## Ergonomic & Functional Design

Lab professionals spend long hours working at their benches, and we recognize the importance of comfort and usability in laboratory furniture. Our tables are designed with:

**Ergonomic Heights:** Adjustable or fixed-height options tailored to ensure comfort and reduce strain during prolonged use.

**Ample Work Space:** Generous surface area for conducting multiple tasks, placing equipment, and organizing research materials efficiently.



## Resistant to Chemicals & Wear

In a lab environment, exposure to chemicals is inevitable.

Our tables are equipped with:

**Chemical-Resistant Work Surfaces:** Durable tops that are resistant to acids, solvents, and other harsh chemicals, ensuring the tables maintain their integrity and appearance over time.

**Heat and Impact Resistance:** Built to endure the physical stresses of a working lab, our tables are designed for maximum durability, making them ideal for both routine lab work and heavy-duty tasks.

## Precision Fabrication with CNC Technology

In a lab environment, exposure to chemicals is inevitable.

Our tables are equipped with:

**Chemical-Resistant Work Surfaces:** Durable tops that are resistant to acids, solvents, and other harsh chemicals, ensuring the tables maintain their integrity and appearance over time.

**Heat and Impact Resistance:** Built to endure the physical stresses of a working lab, our tables are designed for maximum durability, making them ideal for both routine lab work and heavy-duty tasks.



## Why Choose VERO Spaces for Your Lab Furniture?

**Proven Expertise:** We specialize in fabricating high-quality laboratory and institutional furniture, ensuring that each product meets industry standards for performance, safety, and durability.

**Custom Solutions:** We offer a personalized approach to meet your specific requirements, whether you need specialized features, unique dimensions, or bulk orders for a complete lab setup.

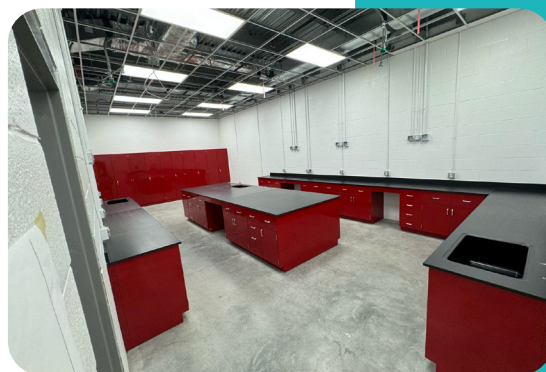
**Innovative Technology:** Our advanced machinery allows us to deliver precision engineering and tailor-made solutions, all while reducing production time and ensuring cost-effectiveness.

## Supporting Modern Labs with Innovation

Whether you're upgrading your existing lab or building a new one, we understand the importance of having reliable, functional, and adaptable furniture. Our Laboratory Island Tables are designed to streamline your workflow, offering:

**Centralized Workstations:** Ideal for collaborative tasks, our island tables serve as central hubs, allowing teams to work together effectively while maximizing lab space.

**Flexibility in Lab Design:** Our customizable solutions allow you to optimize your lab's layout and functionality, ensuring that your workspace adapts to your research needs.





## Applications Across Industries

VERO Spaces serves a diverse range of industries, including:

**Pharmaceutical & Biotechnology Labs:** Our tables are ideal for research and development, drug testing, and clinical trials, offering surfaces that are easy to sanitize and resistant to contamination.

**Educational & Research Institutions:** From universities to independent research facilities, our island tables support both teaching labs and advanced scientific research, offering flexible designs suited to dynamic learning environments.

**Industrial & Quality Control Labs:** Our tables provide the sturdy and reliable surfaces needed for quality testing and analysis in manufacturing and industrial settings.



### Ready to take your laboratory to the next level?

At VERO Spaces, we are committed to delivering top-quality laboratory furniture that is customized to meet the specific needs of your lab. Whether it's a single unit or a full-scale lab fit-out, we're here to help you create a workspace that supports accuracy, safety, and efficiency.

Get in touch with us today to learn more about our Laboratory Island Tables and how we can help you enhance your lab's performance!



# ALLIED PRODUCTS

**WASH BASIN**



**CANTEEN TROLLEY**



**CANTEEN TABLES**



**FILE CABINETS**



**GLASS CABINETS**



**OFFICE TABLES**





## SINGLE & DOUBLE STEP STOOL



## REVOLVING STOOL (STAINLESS STEEL TOP)



## STAFF LOCKER CUPBOARD





## Contact Us!



+91 9791908830  
+91 9629028830



pioj@verospaces.com  
www.verospaces.com



No 1/515-16, Ettayapuram Rd,  
Mappillaiurani, Thoothukudi,  
Tamil Nadu 628002